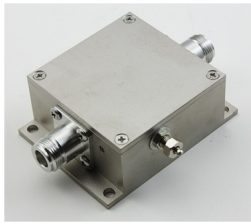


GPSAMP-XX/ADJ-N-F/F



GPSAMP-XX



GPS Line Amplifier

??: ????
1-4 Weeks
★★★★

[????????](#)

??

Applications:

GPS Signal Indoor, Timing, Survey, Wireless Communication
etc. Gain: 0~30dB, Variable options available.

Response For GPS:L1,L2,L2C,L5;

Glonass:G1,G2; Galileo:L1,E1,E2,E5(E5a,E5b),E6; Beidou2:B1,B2,B3;

IRNSS L1,L5;

Omni Star Pass DC