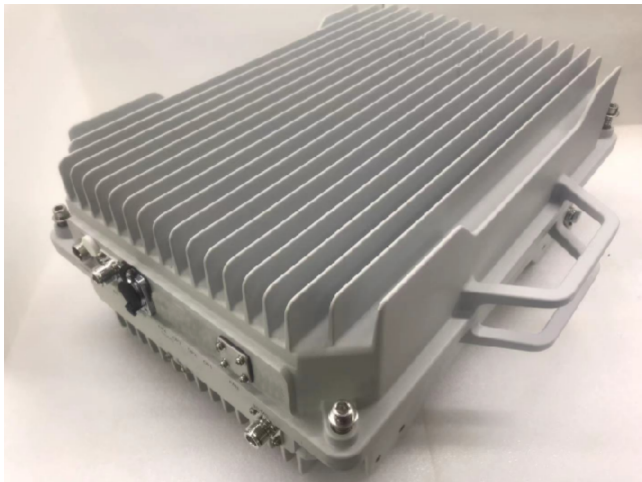


## JTD-RP-5G NR -90-40



JTD-RP-5G NR -90-40



3500 MHz RF Repeater Single Band (40dBm)

??: ????  
1-2 months  
★☆☆☆☆

[?????????](#)

??

**?????**

- Ø ??????????????
- Ø ?????????????????????
- Ø ?????????????????
- Ø ??5G??TDD????????????5G????????????????
- Ø ??????????ALC????????????????
- Ø ?????????????????
- Ø ?????????????????????

## Key features

- ∅ Two signal ports with full duplex design.
- ∅ Linear power amplification to effectively suppress inter-modulation and spurious emission.
- ∅ Stable and improved signal transmission quality.
- ∅ Built-in 5G Dynamic TDD Sync Detection Module, automatic completion of 5G wireless network cell search and wireless signaling processing.
- ∅ Smart Automatic Level Control (ALC) ensures output level stable and adjustable continuously.
- ∅ Auto Isolation check between service and donor antennas.
- ∅ Smart mode to auto-adjust gain according to the isolation and signal level received by donor site.

